

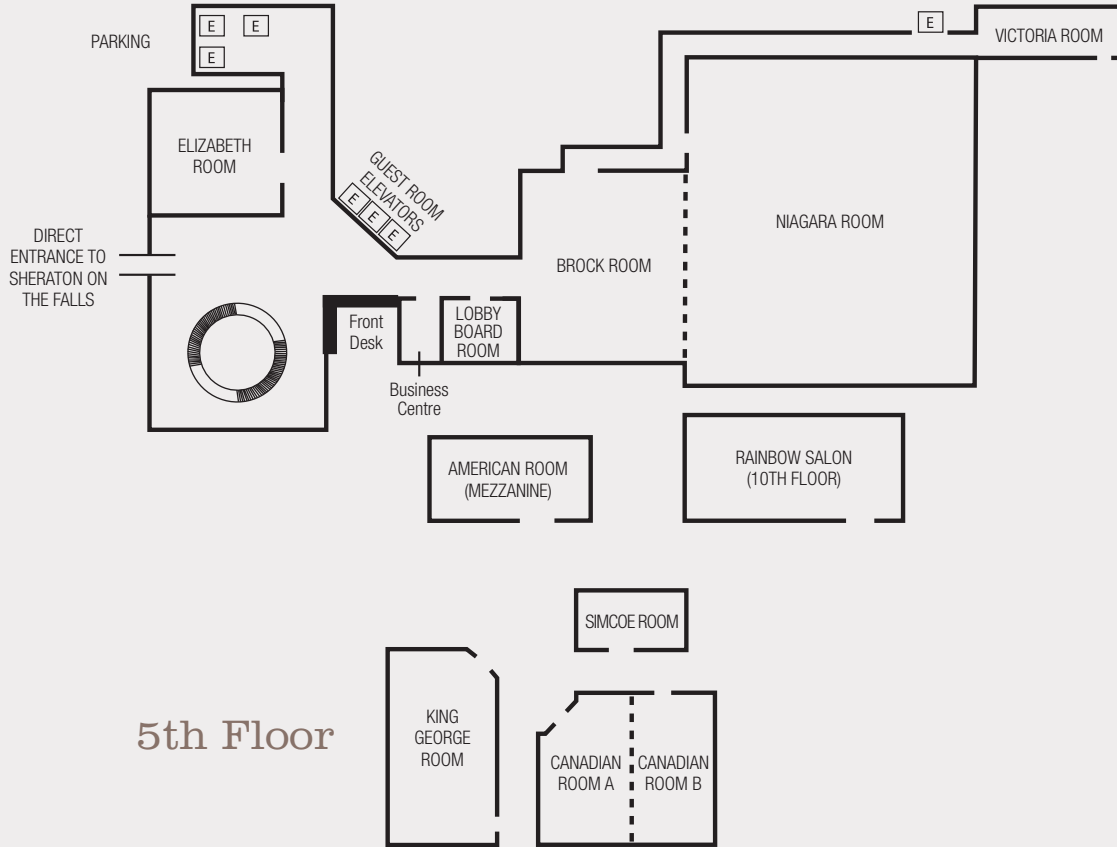


LEVEL - CROWNE PLAZA FALLSVIEW




CROWNE PLAZA®

NIAGARA FALLS



5th Floor

| ROOM | DIMENSIONS | THEATRE | CLASSROOM | HOLLOW SQ. | RECEPTION | BANQUET | BOOTH (8X10) | BOOTH (10X10) |
|------------------|-----------------------|----------------------------|-----------|------------|-----------|---------|--------------|---------------|
| Grand Ballroom* | 7578 sq.ft. | 850 | 504 | - | 830 | 696 | 60 | 52 |
| Niagara Room | 72 x 79 = 5688 sq.ft. | 700 | 400 | - | 650 | 564 | 45 | 40 |
| Brock Room | 42 x 45 = 1890 sq.ft. | 150 | 104 | 50 | 180 | 132 | 15 | 12 |
| Rainbow Salon | 44 x 42 = 1848 sq.ft. | 120 | 77 | 40 | 160 | 132 | - | - |
| Elizabeth Room | 44 x 34 = 1496 sq.ft. | 130 | 68 | 40 | 120 | 120 | - | - |
| Canadian Room AB | 42 x 32 = 1344 sq.ft. | 120 | 80 | 48 | 130 | 120 | - | - |
| Canadian Room A | 21 x 32 = 672 sq.ft. | 60 | 40 | 26 | 60 | 60 | - | - |
| Canadian Room B | 21 x 32 = 672 sq.ft. | 60 | 44 | 30 | 70 | 60 | - | - |
| King George Room | 22 x 42 = 924 sq.ft. | 70 | 48 | 38 | 90 | 72 | - | - |
| American Room | 31 x 23 = 713 sq.ft. | 60 | 36 | 32 | 70 | 60 | - | - |
| Victoria Room | 39 x 15 = 585 sq.ft. | 65 | 32 | 28 | 60 | 60 | - | - |
| Lobby Boardroom | 24 x 16 = 384 sq.ft. | Boardroom Only (12 People) | | | | | | |
| Simcoe Room | 23 x 11 = 253 sq.ft. | Boardroom Only (12 People) | | | | | | |

*The Grand Ballroom is a combination of the Brock Room and the Niagara Room.